



# COMPOST

堆肥 ABONO PHÂN HỮU CƠ

Compost food scraps, food-soiled paper, paper to-go containers and cartons, yard debris and untreated wood

# Composting is Required!

Composting is required by State AB 1826 and by Alameda County Waste Management Authority Ordinance 2012-01

### Compost Collection Best Practices:

1. Separate Compostable Materials
  - No glass, plastic, metal or trash in compost
2. Collect in Your Indoor Containers
  - Line containers with clear plastic bags, paper bags, BPI certified compostable plastic bags or use no bag at all
3. Empty into Compost Cart for Pickup
  - Monitor to ensure compost cart contains only compostable materials

Composting at Calavera



### DO NOT INCLUDE

Any recyclables or trash.  
See Programs & Resources Panel for Hazardous Waste.

Free Technical Assistance!  
Call WMAC (510) 613-8700 or email: [csnorthbay@wm.com](mailto:csnorthbay@wm.com)



# RECYCLE

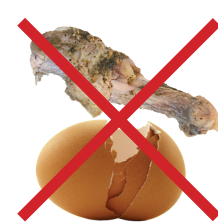
回收 REICLAR TÁI CHẾ

Recycling is required by State AB 341 and by Alameda County Waste Management Authority Ordinance 2012-01

Recycle plastic containers, aluminum/metal food containers, cardboard, clean paper, glass food and beverage containers



Recycling at Chop House



### DO NOT INCLUDE

Any compostable, non-recyclable or hazardous items.  
See Programs & Resources Panel for Hazardous Waste.

See Recycling Provider Directory at [OaklandRecycles.com](http://OaklandRecycles.com)



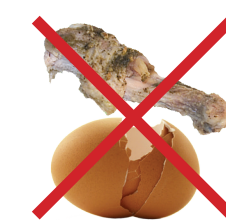
# TRASH

垃圾 BASURA RÁC

Non-Recyclable & Non-Hazardous Materials



Discarding gloves at Lugomare



### DO NOT INCLUDE

Any compostables or recyclables.  
See Programs & Resources Panel for Hazardous Waste.

Call WMAC (510) 613-8700 or email: [csnorthbay@wm.com](mailto:csnorthbay@wm.com)